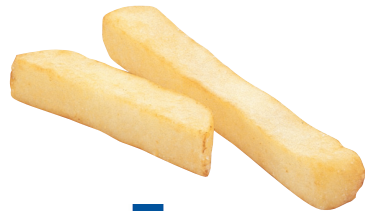


# ADR<sup>®</sup> 5 Upgrade

for ADR<sup>®</sup> II and ADR<sup>®</sup> III

## Automatic Defect Removal Systems\*



# adr<sup>®</sup>5

Years ago, you made a smart investment by installing a Key Technology ADR<sup>®</sup> II or ADR<sup>®</sup> III. Now you can extend its life and value with the NEW ADR<sup>®</sup> 5 Upgrade that gives your existing system state-of-the-art capabilities.

**The ADR<sup>®</sup> 5 Upgrade enables powerful new performance now and in the future - without line rebuilds. You'll see reduced maintenance costs, boosted throughput and yield, and an even better product. Here's how:**

### Save BIG on Maintenance

Trade off-line time for **more uptime** spent producing superior product:

- **NEW: Air-actuated knives;** valve lifetime is multiplied
- **NEW: Decrease cutterwheel overhaul frequency**
- **NEW: No Racking** with pinned carousel
- **NEW: Long-life, solid state LED lighting;** No bulbs to change, calibration is practically eliminated
- **NEW: Protected electronics;** fully sealed camera/lamp housing prevents accidental misalignment or damage
- **NEW: Simplified touchscreen user interface;** easy to train operators
- **NEW: Continued easy/economical upgrades** with modular vision platform

### Gain Excellent Quality Control

New G6 vision technology means you take *only* your best product to market:

- **Remove smaller defects** - G6 trichromatic Vis/IR cameras provide high-resolution, 1024-pixel vision
- **Assure quality faster** - identify peel, good flesh & defects *simultaneously* at 4,000 scans/sec... **performance unmatched in the industry today**
- **Get the green out** with Vis/IR technology that can also work efficiently on peel-on product

### Increase Capacity

See **20% greater throughput** on existing ADR<sup>®</sup> II and ADR<sup>®</sup> III systems:

- **Step up product flow** - process up to 17,000 lbs (7.7 metric tons) every hour
- **Control quality** without overloading ADR<sup>®</sup>s, even during late storage processing

### Improve Yield with "Smart Cutting"

Precision, **single-knife** accuracy lets you save (and sell) more good product:

- **Eliminate waste - throw a single knife** to remove end defects and to selectively cut good fries in half without waste\*
- **Reduce white cut rate** - up to 50% decrease in white cubes
- **Reduce downstream breakage** of overlong fries
- **Eliminate wounded steak cuts** - ADR<sup>®</sup> 5 uses 2 side-by-side blades where needed



*\*ADR<sup>®</sup> 4 units are upgradeable to the G6 platform only*

**Key Technology BV**

Beijerdstraat 10, 4112 NE Beusichem, The Netherlands

Phone: +31 0 345-50 9900 • Fax: +31 0 345-50 1594 • [keybv@key.net](mailto:keybv@key.net) • [www.key.net](http://www.key.net)



## Why Upgrade?

- While continuing to develop innovative new technologies, Key also has developed creative alternatives to total replacement of older systems - like ADR®II and ADR®III - as replacement components become scarce.
- With the **ADR®5 Upgrade**, you not only receive up-to-the-minute vision technology, you enable modular, software-based performance enhancements in the future - easily and economically.
- The **ADR®5 Upgrade** is a natural step toward enhancing productivity, preparing for the future and outsmarting obsolescence. That's a smart move.

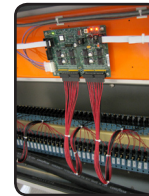
## ADR®5 Upgrade at a Glance

Feature	ADR®5	ADR®III	ADR®II
Capacity (mT/hr)	7.7	6.1	6.1
Cutter Head with Single Knife Throw	•		
Smart Cutting/Length Grading*	•		
Reduced White Cuts	•		
Air-Valve-Actuated Knives	•		
G6 Engine/Vision Platform	•		
Vis/IR Cameras	•		
LED Lighting	•		
Single Power/Control Unit	•		
Bed Shift	•	•	•
Brush-Off	•	•	•
Recycle Available	•	•	•

\*at rated capacity

### Air-Actuated Valves

Long valve life; lower parts and labor expense; more uptime



### New Cutterwheel

Single-blade capability for long fry and smart cutting; lower white cut rate, faster belt speeds, no racking



### Single-Unit Power/Control

With simplified touch-screen user interface



### G6 Image Processor

Pentium®-based module converts camera information to knife action



### Solid-State LED Lighting (no bulbs)

Red/green/infrared lighting enables peel-on or peeled product cutting

